

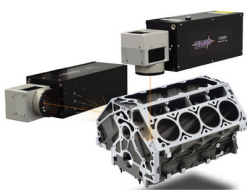
SOLUTIONS WITH TELESIS LASERS

TELESIS IS NOT ONLY KNOWN FOR THEIR INNOVATION AND LEADERSHIP IN LASER MARKING TECHNOLOGY BUT ALSO FOR THEIR PROBLEM SOLVING LASER TECHNOLOGY.



Every Telesis laser marking system is designed to stand up to rigorous factory floor conditions. With very little down time experienced due to lower maintenance requirements, which allows the operator to focus time and efforts on the core business.

DUAL-HEAD



The innovative, patented Telesis dual-head laser system is perfectly suited for advanced applications that require rapid processing. The multi-head design of this laser offers the unique ability to control two laser markers with the same controller, reducing overall footprint and lowering the cost of operation. It is the industry's only fiber laser system of its kind to be entirely air cooled and powered from a singlephase power outlet.

FIBER



The Telesis Fiber laser marking system is the most versatile marking technology due to its adaptability, minimal maintenance, and the total elimination of consumables from the marking process. They are most used in metal and plastic processing industries for precise and efficient direct marking of parts and products. From automotive manufacturing through medical and security technology to electronics, Telesis Fiber delivers.

ULTRAVIOLET



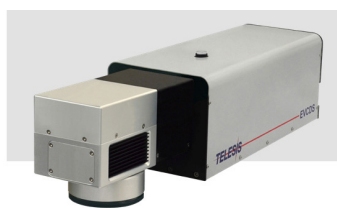
The 355 nm UV laser wavelength is versatile in marking a wide range of materials and perfect for "cold marking" applications where heat-affected zones are not allowed — the machine is great for marking plastics and silicon materials without additives and can mark glass with a reduced risk of microfracture. The very small high-quality beam spot makes precision micro-marking with extremely sharp resolution possible.

GREEN



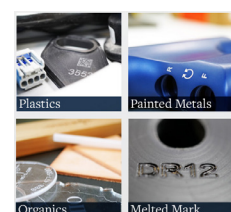
The Telesis EV4GDS is a fiber-coupled, diode-pumped, solidstate (DPSS) green wavelength system. The laser beam characteristics are optimized for applications that require high beam quality and stability. The EV4GDS offers extra power and speed—the ideal choice for laser marking, scribing, and trimming. The robust mechanical and optical design of the Telesis EV4GDS enables operation in an industrial environment where shock, vibration, and dust are a concern.

VANADATE



E-Series diode-pumped YAG and vanadate laser markers offer improved beam quality, increased depth of focus, and higher peak powers compared to fiber lasers—for fine marking, heat-sensitive materials (metal, foils, silicon, plastics, etc.) and applications where high consistency is required.

CO₂



Proven CO₂ systems provide a galvo-steered beam. It is an excellent choice for heavy use and high-duty cycle environments and is beneficial to label and packing operations as it removes the need for consumables and speeds process. Equally capable at stationary bench-top use and mark-on-the-fly installations, this machine can mark up to 1300 characters per second in automated environments.

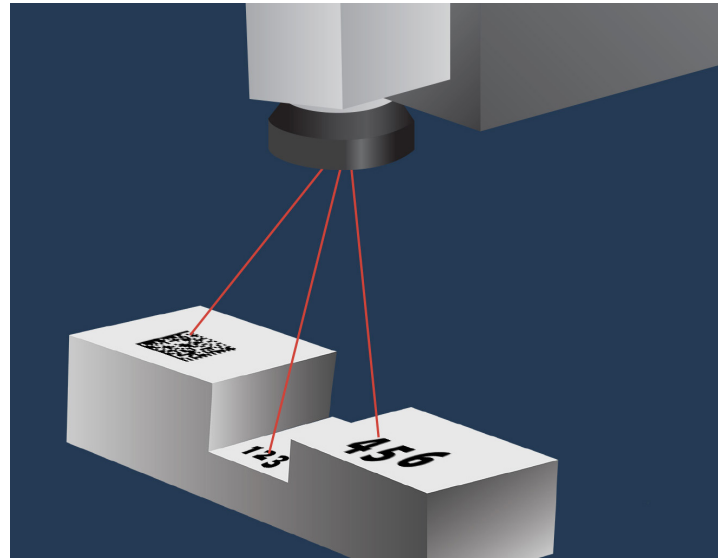
TECHNOLOGY OPTIONS

VARI-Z™ 3-AXIS 3D MARKING

Vari-Z™ 3-Axis Laser Markers are perfectly suited for advanced applications that require processing of non-flat parts, multiple planes, and uneven surfaces. The Telesis Vari-Z™ technology increases the focal range, eliminating the need for tooling changes while saving time and money.

AUTOFOCUS

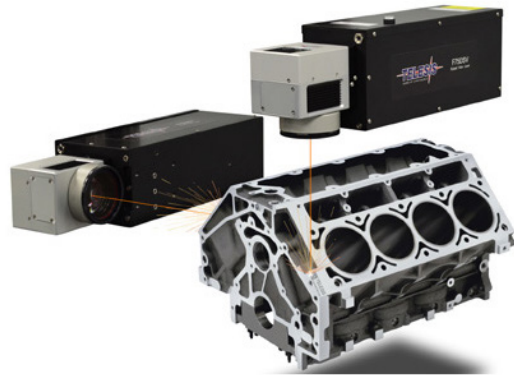
Additionally, the AutoFocus function option on available Vari-Z™ model lasers compensates for varying target heights. This displacement sensor allows the machine to continuously compensate for changes in material thickness.



DOUBLE THE CAPABILITY WITH ONE CONTROLLER

DUAL-HEAD LASER MARKING SYSTEM

- **Increases throughput** in high-speed and repetitive applications
- Allows for the unique ability to **control two lasers from the same controller**
- **Saves floor space and reduces part handling** by the operator
- **Creates unmatched marking efficiency** and operating productivity



IZONIT™ LASER MARKING VISION SYSTEM

Accurately and easily **establish and view mark positioning** before firing the laser.

Set the mark location when the object to be marked is not visible

- Dial-indexing table enclosures
- Class 1 safety enclosures
- Remote marking operations

Save time and increase productivity during pattern design with a camera-assisted mark positioning system.

Increase throughput—especially with marking applications that involve multiple parts or a variety of parts.

Immediately verify and validate data matrix 2D codes for compliance

