

MAKING YOUR MARK WITH TELESIS PINSTAMP®

THE TELESIS PINSTAMP® MARKING SYSTEMS ARE A FULL RANGE OF PROGRAMMABLE SINGLE AND MULTI-PIN MARKING SYSTEMS. THESE SYSTEMS ARE BASED ON TELESIS ORIGINAL, PATENTED "FLOATING PIN" DESIGN.



SINGLE-PIN DOT PEEN MARKERS

TMP1700



Features:

This proven industrial workhorse is an industry staple and continues to impress.

What it's good for?

Field-Proven Design
 Highly Functional
 Unparalleled Reliability

TMP2100



Features:

The TMP2100 provides great functionality fit into a smaller footprint.

What it's good for?

Fast Marking
 Small Characters
 Compact Envelope

TMP3200



Features:

A generously sized marking window sets this dot peen marker apart from the rest.

What it's good for?

Fast Marking
 For Constrained Space
 Robust Construction

TMP4210



Features:

The TMP4210 is an incredibly lightweight and compact hand-held marker.

What it's good for?

For High Production
 Space Constraints
 Easy to Use

TMP4750



Features:

This lightweight hand-held marker delivers remarkable power and depth.

What it's good for?

VIN Marking
 Extra-Deep Marking
 Dark Spaces

TMP6100



Features:

The robotic design delivers precise marks and makes part placement easy.

What it's good for?

Large Applications
 Cylindrical Marking
 Medical Applications

MULTI-PIN DOT PEEN MARKERS

TMM4200



Features:

A unique, compact ergonomic multi-pin marker is incredibly fast.

What it's good for?

Constrained Space
 Comfortable Grip
 Makes Quick Marks

TMM4215



Features:

A unique, compact ergonomic multi-pin marker is incredibly fast.

What it's good for?

Constrained Space
 Comfortable Grip
 Makes Quick Marks

TMP4250



Features:

Ideal for online applications in wet, dirty manufacturing environments.

What it's good for?

Wet Environments
 Fixtured Applications
 For Constrained Space

TMM5100



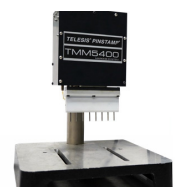
Features:

Equipped with six marking pins, the TMM5100 is a lightweight and compact dot peen marker.

What it's good for?

Fast Marking
 Compact Envelope
 Great for VIN marking

TMM5400



Features:

Equipped with eight marking pins, the TMM5400 is the fastest dot peen marker available.

What it's good for?

Super Fast Marking
 Compact Envelope
 Optimizes Cycle Time

PORTABLE DOT PEEN MARKERS

TMP4500E



Features:

A powerful piece of hand-held equipment, this marker eliminates the need for air.

What it's good for?

Does Not Require Air
Makes Deep Marks
Easy to Hold

NOMAD 2000



Features:

The Nomad 2000 is a fully portable, rechargeable, battery-powered system.

What it's good for?

Rechargeable Battery
Can Go Anywhere
Does Not Require Air

NOMAD 4000



Features:

The Nomad 4000 is a fully portable, rechargeable, with more power than the 2000.

What it's good for?

Makes Deep Marks
Can Go Anywhere
Does Not Require Air



BENCHMARK®

ENTRY LEVEL DOT PEEN MARKERS

BENCHMARK® 200



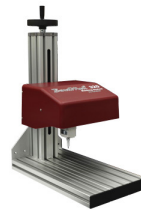
Features:

An entry-level system with extruded aluminum marking head mounting post and base.

What it's good for?

Smaller Budgets
Does Not Require Air
Great Value

BENCHMARK® 320



Features:

An entry-level machine good for bench-top applications and stand-alone marking.

What it's good for?

Smaller Budgets
Does Not Require Air
Great Value

BENCHMARK® 460



Features:

An entry-level fully programmable machine great for portable marking.

What it's good for?

Smaller Budgets
Does Not Require Air
Great Value

GALLERY

