

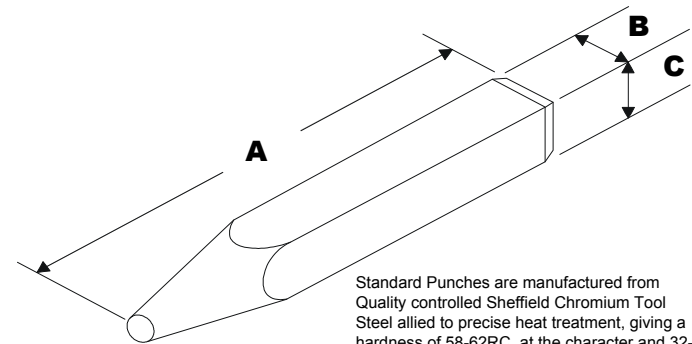
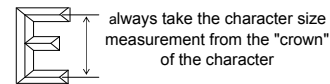
Standard Punches

- Sharp Faced Characters
- Positive readable impression
- Ideal for a whole range of marking uses on anything from aluminium to stainless steel

Available in singles, Sets of 27 Characters (A-Z,&) and Sets of 10 (0-9) in the following sizes:

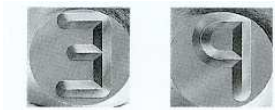
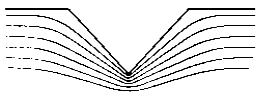


Size Range								
CHARACTER SIZE		BLANK SIZE						
		A		B		C		
Metric	Imperial	Metric	Imperial	Metric	Imperial	Metric	Imperial	
1.00mm	.040"	63.50mm	2.1/2"	6.35mm	1/4"	6.35mm	1/4"	
1.50mm	1/16"	63.50mm	2.1/2"	6.35mm	1/4"	6.35mm	1/4"	
2.00mm	5/64"	63.50mm	2.1/2"	6.35mm	1/4"	6.35mm	1/4"	
2.50mm	3/32"	63.50mm	2.1/2"	6.35mm	1/4"	6.35mm	1/4"	
3.00mm	1/8"	63.50mm	2.1/2"	6.35mm	1/4"	6.35mm	1/4"	
4.00mm	5/32"	70.00mm	2.3/4"	9.50mm	3/8"	9.50mm	3/8"	
5.00mm	3/16"	70.00mm	2.3/4"	9.50mm	3/8"	9.50mm	3/8"	
6.00mm	1/4"	70.00mm	2.3/4"	9.50mm	3/8"	9.50mm	3/8"	
8.00mm	5/16"	89.00mm	3.1/2"	12.70mm	1/2"	12.70mm	1/2"	
10.00mm	3/8"	89.00mm	3.1/2"	14.30mm	9/16"	14.30mm	9/16"	
12.50mm	1/2"	89.00mm	3.1/2"	19.00mm	3/4"	19.00mm	3/4"	



Standard Punches are manufactured from Quality controlled Sheffield Chromium Tool Steel allied to precise heat treatment, giving a hardness of 58-62RC. at the character and 32-40 R.C. at the striking end

SHARP FACED IMPRESSION



Visual of Standard Character

The character appears in reverse to indent a positive readable impression

Standard Punches are manufactured to quality system ISO 9001:2000



Edward Pryor & Son Ltd. Egerton Street Sheffield England
Tel: (+44) 114 276 6044 Fax : (+44) 114 276 6890
email : enquiries@pryormarking.com website : www.pryormarking.com