

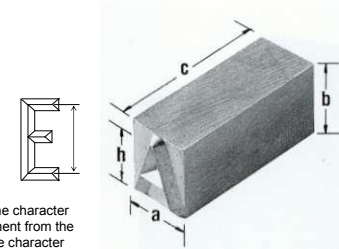
# Lowstress Type

Specially engineered so that lower stress levels are introduced into the component being marked. Especially for use in the Aircraft, Nuclear and Oil industries.

Available in singles, Sets of Letters A-Z, Figures 0-9 and full composition Fount Sets in the following Lowstress styles:

## MINISTRESS Lowstress - round faced, continuous line character

Specially engineered so that lower stress levels are introduced into the component being marked. Especially for use in the Aircraft, Nuclear and Oil industries.

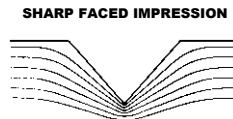
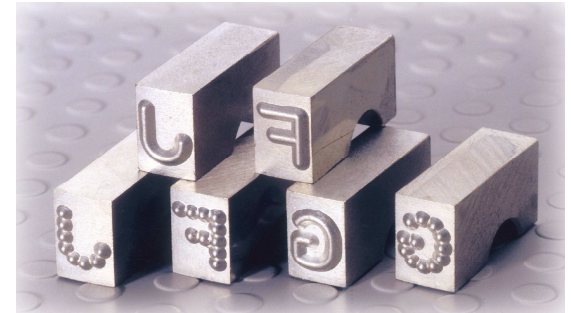


| Pryor Ministress Type code TIMS |          |            |          |                 |          |               |          | Hand Holder      |                         | Holder Body      |                         |
|---------------------------------|----------|------------|----------|-----------------|----------|---------------|----------|------------------|-------------------------|------------------|-------------------------|
| (H) CHARACTER SIZE              |          | BLANK SIZE |          |                 |          |               |          | Holder Reference | No of pieces per Holder | Holder Reference | No of pieces per Holder |
| Metric                          | Imperial | (C) Length |          | (B) North/South |          | (A) East/West |          |                  |                         |                  |                         |
|                                 |          | Metric     | Imperial | Metric          | Imperial | Metric        | Imperial |                  |                         |                  |                         |
| 3.00mm                          | 1/8"     | 22.20mm    | 7/8"     | 6.40mm          | 1/4"     | 4.80mm        | 3/16"    | H6.35-39         | 8                       | PH6.35-60        | 12                      |
| 5.00mm                          | 3/16"    | 19.05mm    | 3/4"     | 9.50mm          | 3/8"     | 6.40mm        | 1/4"     | H9.6-40          | 6                       |                  |                         |

## DOTSTRESS Lowstress - round faced, dot formation character

Introduced for even greater reduced stress levels and enhanced fatigue properties. Producing a character with similar nose formation to Ministress but with the added benefit of impressing the character in a dot formation.

| Pryor Dotstress Type code TIDS |          |            |          |                 |          |               |          | Hand Holder      |                         | Holder Body      |                         |
|--------------------------------|----------|------------|----------|-----------------|----------|---------------|----------|------------------|-------------------------|------------------|-------------------------|
| (H) CHARACTER SIZE             |          | BLANK SIZE |          |                 |          |               |          | Holder Reference | No of pieces per Holder | Holder Reference | No of pieces per Holder |
| Metric                         | Imperial | (C) Length |          | (B) North/South |          | (A) East/West |          |                  |                         |                  |                         |
|                                |          | Metric     | Imperial | Metric          | Imperial | Metric        | Imperial |                  |                         |                  |                         |
| 3.00mm                         | 1/8"     | 22.20mm    | 7/8"     | 6.40mm          | 1/4"     | 4.80mm        | 3/16"    | H6.35-39         | 8                       | PH6.35-60        | 12                      |
| 5.00mm                         | 3/16"    | 19.05mm    | 3/4"     | 9.50mm          | 3/8"     | 6.40mm        | 1/4"     | H9.6-40          | 6                       |                  |                         |



A lowstress impression helps avoid premature cracking, by eliminating the stress concentration at the bottom of the indentation

| SHANKS     |                     |                    |
|------------|---------------------|--------------------|
| Ref        | Size                | Suit Pryor Machine |
| HMS0630    | 1/4" dia x 1.3/16"  | 114M               |
| HMS0830    | 5/16" dia x 1.3/16" |                    |
| HMS1040    | 3/8" dia x 1.57"    | 115M               |
| HMS1650    | 5/8" dia x 2"       | 116M               |
| HMS2025    | 25/32" dia x 1"     |                    |
| HMS2040    | 25/32" dia x 1.57"  |                    |
| HMS25.4-40 | 1" dia x 1.1/2"     |                    |

PRYOR LOWSTRESS TYPE is manufactured to quality system BS EN ISO 9001



Edward Pryor & Son Ltd. Egerton Street Sheffield England  
 Tel: (+44) 144 276 6044 Fax : (+44) 144 276 6890  
 email : enquiries@pryormarking.com website : www.pryormarking.com